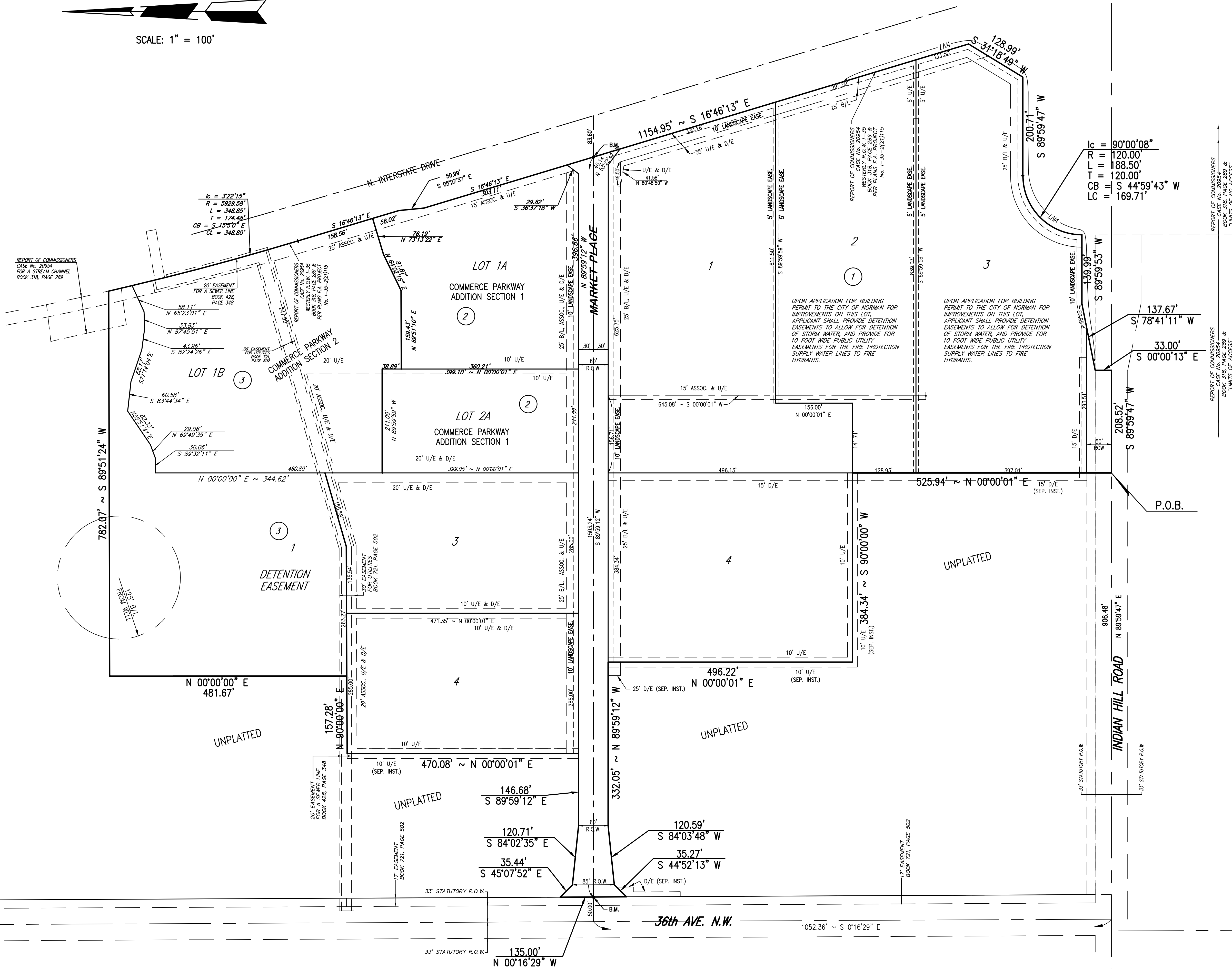




SCALE: 1" = 100'

UNPLATTED



$k = 3722.15'$
 $R = 5929.58'$
 $L = 348.86'$
 $T = 174.48'$
 $CB = S 15^{\circ}50' E$
 $CL = 348.80'$

REPORT OF COMMISSIONERS
CASE NO. 2004
FOR A STREAM CHANNEL
BOOK 318, PAGE 289

20' EASEMENT
FOR A SEWER LINE
BOOK 428,
PAGE 548

20' EASEMENT
FOR UTILITIES
BOOK 721,
PAGE 502

10' EASEMENT
FOR UTILITIES
BOOK 721,
PAGE 502

20' EASEMENT
FOR A SEWER LINE
BOOK 428,
PAGE 548

17' EASEMENT
BOOK 721,
PAGE 502

17' EASEMENT
BOOK 721,
PAGE 502

UPON APPLICATION FOR BUILDING PERMIT TO THE CITY OF NORMAN FOR IMPROVEMENTS ON THIS LOT, APPLICANT SHALL PROVIDE DETENTION EASEMENTS TO ALLOW FOR DETENTION OF STORM WATER, AND PROVIDE FOR 10 FOOT WIDE PUBLIC UTILITY EASEMENTS FOR THE FIRE PROTECTION SUPPLY WATER LINES TO FIRE HYDRANTS.

UPON APPLICATION FOR BUILDING PERMIT TO THE CITY OF NORMAN FOR IMPROVEMENTS ON THIS LOT, APPLICANT SHALL PROVIDE DETENTION EASEMENTS TO ALLOW FOR DETENTION OF STORM WATER, AND PROVIDE FOR 10 FOOT WIDE PUBLIC UTILITY EASEMENTS FOR THE FIRE PROTECTION SUPPLY WATER LINES TO FIRE HYDRANTS.

REPORT OF COMMISSIONERS
CASE NO. 2004
FOR A STREAM CHANNEL
BOOK 318, PAGE 289 &
BOOK 318, PAGE 289 &
LIMITS OF ACCESS

REPORT OF COMMISSIONERS
CASE NO. 2004
FOR A STREAM CHANNEL
BOOK 318, PAGE 289 &
BOOK 318, PAGE 289 &
LIMITS OF ACCESS